

DEKKADANCERS: LA DOLCE VITA

Technical rider



CONTACTS:

Responsible person:

Štěpán Pechar
stepan@dekkadancers.net,
+420 736 177 259

Production/set:

Pavel Knolle
pavel@dekkadancers.net, +420 602 232 462,

Tereza Baschová

tereza@dekkadancers.net, +420 725 443 669

Light design

Lukáš Brinda
brinda.lukas@gmail.com, +420 775 336 530

Sound:

in agreement with DEKKADANCERS production

CONTROL ROOM

Open control booth with a good view of the stage,
ideally live-post in the auditorium

STAGE SIZE (OPTIMAL)

Width - 10 m
Depth - 10 m
Height - 7 m

CREATIVE TEAM

Theme, choreography and direction: Štěpán Pechar
Dramaturgy and direction: Štěpán Benyovszký
Set and costumes design: Pavel Knolle
Music: Jan Šikl
Lighting design: Lukáš Brinda
Cast: 6 x dancers
Running time: approx. 70 min. (no intermission)

FLOOR

Wooden floor, level
Black ballet carpet

SET DESIGN (provided by DEKKADANCERS)

Rolling container
Street lamp + 4 x single pulley, 6 x carabiner, 4 x loop 60cm, pinrail, 2 x rope 20m - anchoring on a cleat
Bins
Pot, ladle and disposable dishes
Table for pouring soup at the beginning of the show (ideally mobile) - we don't have one, rent on site
+ Other small props

CURTAINS

Rear and side brown horizon with passages
(provided by DEKKADANCERS)

CHANGING ROOMS

2 x changing rooms large enough for dancers (3 men, 3 women).
Includes toilet, mirror, shower, costume rack, clean towels.
1 x room for production

STAFF

1 x technician (throughout the preparation, performance and dismantling of the set we need a competent technician knowledgeable about local operations)

1 x lighting engineer (provided by DEKKADANCERS)

+ 1 x local lighting engineer

LIGHTING

See Light Rider below.

SOUND

See Audio Rider

OTHER TECHNICAL REQUIREMENTS

DMX atmospheric hazer (smoke machine)

Snow machine

Fan

SCHEDULE (approximate)

09:00-15:00 preparation of lights, sound, video, set

15:00-16:00 break

16:00-18:00 rehearsal

18:00-19:00 preparation for the performance

19:00-20:30 performance

20:30-22:00 dismantling

SOUND

F.O.H. MIXING DESK:

Preferred mixing consoles are DiGiCo SD series, Yamaha CL/QL, Allen&Heath SQ/dLIVE, Soundcraft Vi, Midas Pro, with latest firmware update. Console must be placed in audience, central line from the stage

Minimal requirements:

- 24 input channels 24
 - 8 Aux busses (pre/post switchable)
 - 2x stereo subgroup with full parametric 4-band equalizer
 - 4x 31 band graphic EQ (BSS, Klark Teknik, DBX)
-

PA:

Powerful main system L/R front of stage - full range quality speakers with subwoofers (Meyer Sound, d&b, L-Acoustics, Nexo, Martin, Adamson...) with equal coverage, able to provide 105 dB (RMS) SPL of undistorted sound during the entire performance. Isolated power supply adapted to the venue.

Extra pair of near field speakers as a front fill system ready to use if needed.

In case there is a big or high balcony or a deep audience space (approx. more than 30 meters) we need a delayed line of extra speakers for the main L/R system

If there is a distance between L/R system more than 15 meters - hung up centre cluster needed. The position of all speakers depends on the venue and communication between technicians and will be decided upon setup by our sound engineer.

Access to the sound system control computer at FOH position for eventual system adjustments.

MONITORS:

4 powerful quality monitors, min 12" speakers (Meyer Sound, d&b, L-Acoustics, Nexo, Martin, Adamson...) sends on 2 stereo outputs (front stereo, rear stereo)

SURROUND:

2-4 quality speakers for additional surround effects (Meyer Sound, d&b, L-Acoustics, Nexo, Martin, Adamson...), send on stereo output - delayed

Wireless system:

1x wireless microphone for rehearsals and communication

SOUND TECHNICIAN:

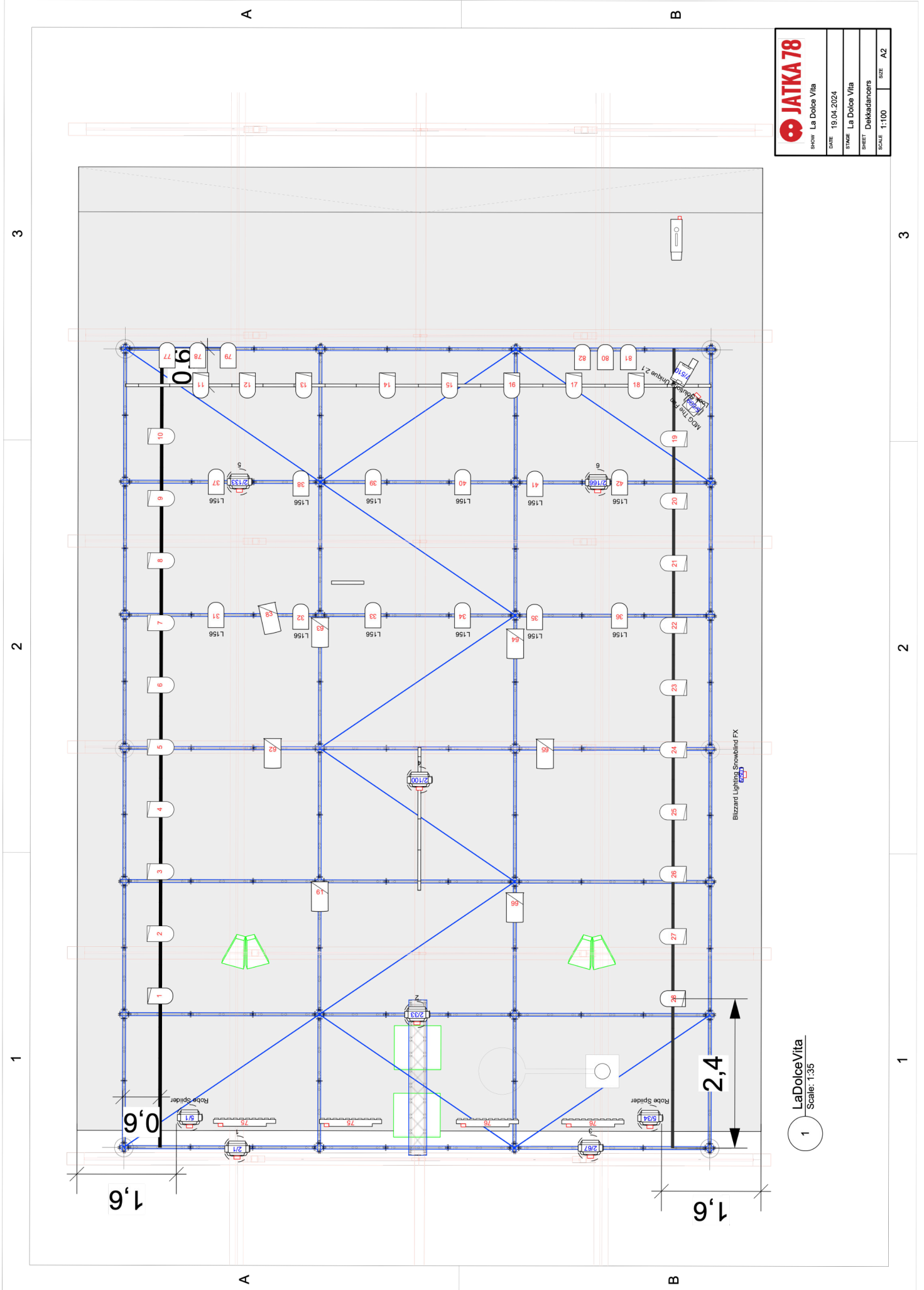
1 in house technician for setup, rehearsals and performance to be present at all time

OTHERS:

Space on table for notebook and 1 rack sound device

Company provide own MacBook with QLab + sound card (8ch out - TRS jack 6,3 - **DI + cables needed!!!**)

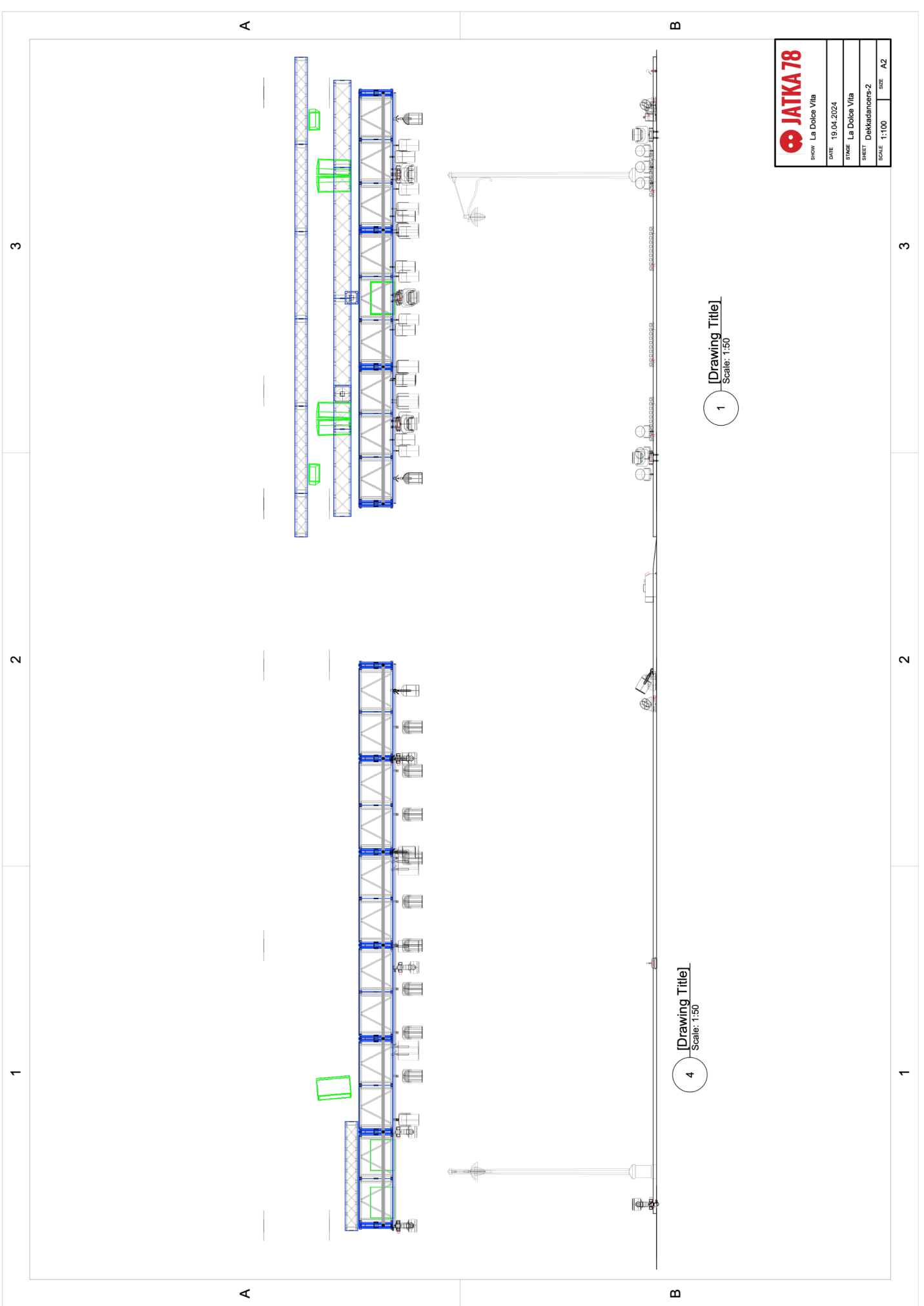
LIGHT RIDER



SHOW: La Dolce Vita
DATE: 19.04.2024
STAGE: La Dolce Vita
SHEET: Dekkandancers
SCALE: 1:100
SIZE: A2

1 LaDolceVita
Scale: 1:335

LIGHT RIDER



4 [Drawing Title]
Scale: 1:50

1 [Drawing Title]
Scale: 1:50

	SHOW: La Dolce Vita
DATE: 19.04.2024	
STATE: La Dolce Vita	
SHEET: Dekkardancers-2	
SCALE: 1:100	SIZE: A2

1

2

3