

DEKKADANCERS: A STREETCAR NAMED DESIRE

Technical rider



CONTACTS::

Responsible person: Štěpán Pechar,
stepan@dekkadancers.net, +420 736 177 259

Production / set:
Pavel Knolle, pavel@dekkadancers.net,
+420 602 232 462,
Tereza Baschová, tereza@dekkadancers.net, +420
725 443 669

Lights:: Lukáš Brinda, brinda.lukas@gmail.com,
+420 775 336 530

Sound: Stanislav Halbrštát, halbrstat@post.cz,
+420 776 311 817

CONTROL ROOM

Open control booth with a good view of the stage,
ideally live-post in the auditorium

STAGE SIZE (OPTIMAL)

Width – 10 m
Depth – 10 m
Height – 7 m"

CREATIVE TEAM:

Choreography & direction: Arthur Pita

Set & costume design: Yann Seabra

Music: Frank Moon

Light design: Lukáš Brinda

Cast: 8 dancers – DEKKADANCERS

Running time: approx. 90 min. (no intermission)

FLOOR

Wooden floor, level (the set is on wheels, thus
any tilting of the floor is undesirable).

Grey, dyed dance floor (provided by
DEKKADANCERS)

SET DESIGN (provided by DEKKADANCERS)

Rotating, movable wall 480 x 240 x 100 cm

Movable bathtub,

Movable table,

Chairs (3)

Movable bed

Movable upright piano

Plus other small props

CURTAINS

Rear black backdrop with passages.

(If a side entrance to the stage is not possible,
then side curtains should be hung on the sides
of the stage.)

CHANGING ROOMS

2 Changing rooms large enough for dancers (4
men, 4 women).

Includes toilet, mirror, shower, costume rack,
clean towels.

1 room for production

STAFF

1 technician (we need a competent technician knowledgeable about local operation throughout the preparation, performance and demolition of the set)

1 lighting engineer (provided by DEKKADANCERS)
+ 1 local lighting engineer

1 sound engineer (provided by DEKKADANCERS)
+ 1 local sound engineer

LIGHTS

See Light Rider below.

SOUND

The performance uses a multichannel sound design that requires the following:

Main stereo PA for the audience, 2 monitors for dancers, 2 rear stage speakers LR and independent SUBBASS (custom channel).

4 wireless microphone sets - 2 for pianos, 1 in the background for ambient noise, 1 for vocals

Mixer: adequate number of independent outputs (7)

7 sound card outputs for multichannel sound

4 input wireless microphones

FX Hall

Other sound specifications to be discussed directly with DEKKADANCERS

OTHER TECHNICAL REQUIREMENTS

DMX atmospheric hazer (smoke machine)

Heavy fog (FOS WATER LOW FOG PRO)

SCHEDULE (approximate)

9:00–15:00 preparation of lights, sound, video, set

15:00–16:00 break

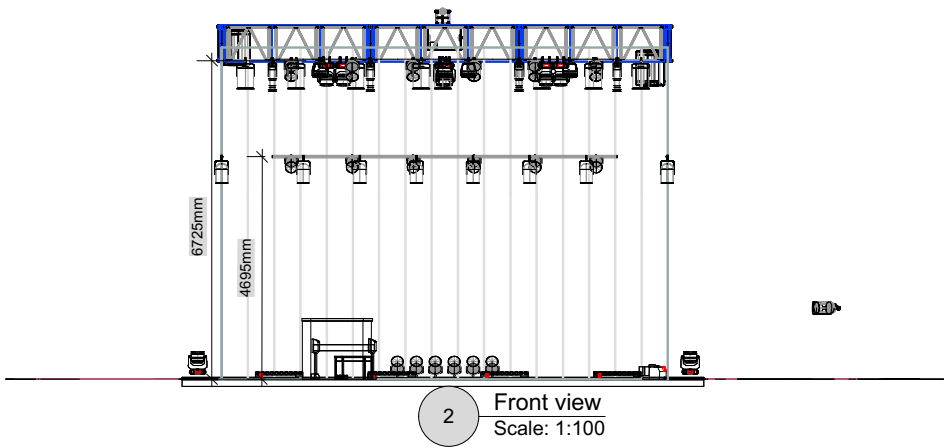
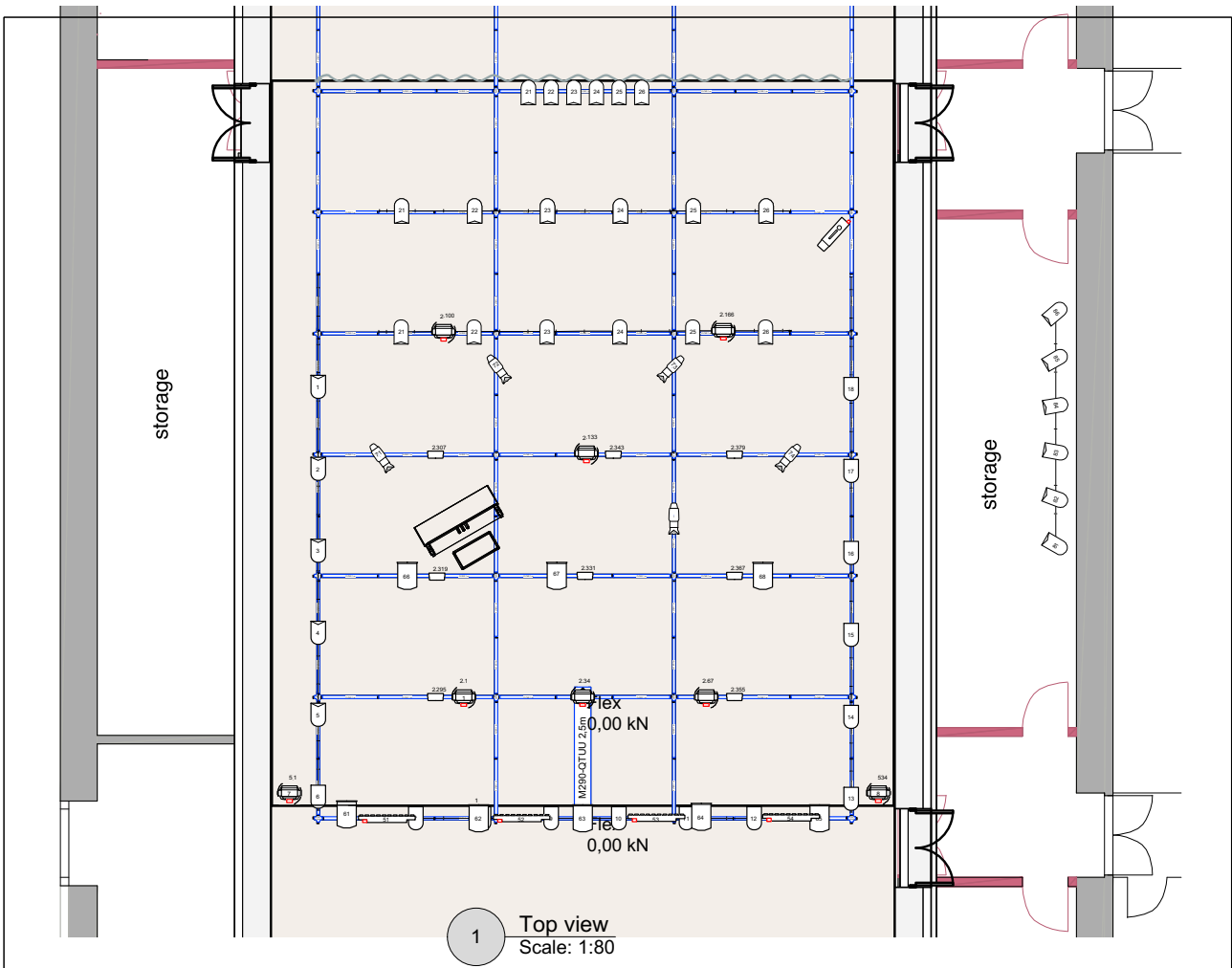
16:00–18:00 rehearsal

18:00–19:00 preparation for the performance

19:00–20:30 performance

20:30–22:00 dismantling

LIGHT RIDER



Light

- ARRI Flood Single @ 1.25kw
- Sixpar 300 @ 220w
- ETC Source4 Zoom 25-50deg 750W @ 750w
- Selecon Arena PC @ 2kw
- Showtec Sunstrip Active @ 800w
- USITT PAR64-MFL @ 1kw
- USITT PAR64-WFL @ 1kw

Show Name A Streetcar Named Desire		
Reference	Drawn By Lukas Brinda	Date
CAD File Name Dekka_Tram1.vwx		

DEKKADANCERS: DOUBLE SHOT

Technical rider



CREATIVE TEAM:

OCCULTATUM

Concept, direction, choreography: Ondřej Vinklát

Music: CoH, J.S. Bach (interpreted by Fanny Vicens), Amon Tobin, Alva Noto, Two Fingers, FKJ

Music mix / recomposition: Ondřej Vinklát

Set: Pavel Knolle, Ondřej Vinklát

Costumes: Pavel Knolle

Masks: Marek Capoušek

Lighting design: Lukáš Brinda

Cast: 3 dancers



CEMETERY OF IDEAS

Direction, choreography: Štěpán Pechar and Viktor Konvalinka

Set and costumes: Pavel Knolle

Cast: 5 dancers

Running time: 120 min. (with intermission)

CONTACTS:

Responsible person:

Štěpán Pechar, stepan@dekkadancers.net,
+420 736 177 259

Production / set:

Pavel Knolle, pavel@dekkadancers.net,
+420 602 232 462

Lights:

Lukáš Brinda, light@jatkan78.cz,
+420 775 336 530

CONTROL ROOM

Open control booth with a good view of the stage, ideally live-post in the auditorium

STAGE SIZE (OPTIMAL)

Width – 11 m

Depth – 12 m

Height – 5 m

FLOOR

Wooden floor, level (part of the set is on wheels, thus any tilting of the floor is undesirable). White / grey dance floor in good condition, covering the entire stage area. (Upon prior arrangement, DEKKADANCERS can bring their own).

SET DESIGN (provided by DEKKADANCERS)

Cube-shaped iron structure (220 cm x 220 cm x 220 cm)

1 tripod with light

1 paper photo background on tripods (height 5 m x width 270 cm)

Platform in the rear left corner of the stage located behind the photo background in the plane of the backdrop – 3 m width x 3 m depth x 140 cm height – we prefer the Nivtec system

Stairs leading to the platform

Bucket suspended by pulley system

Shampoo suspended by a pulley system

Carpet 100 m x 120 cm

1 table

2 folding chairs

1 coat rack

Other small props

CURTAINS

Black box

Hanging a curtain on the backdrop for consultation with DEKKADANCERS

CHANGING ROOMS

Large enough dressing room for 5 dancers.

Includes toilet, mirror, shower, costume rack, clean towels.

STAFF

2 x technician (we need a competent technician knowledgeable about local operations throughout the preparation, performance and demolition of the set)

1 lighting engineer (provided by DEKKADANCERS) + local lighting engineer

1 x Local sound engineer

LIGHTS - see light rider below

SOUND

1 overhead microphone

Standard requirements for audio equipment

A link between audio track and lights is required (QLab)

VIDEO

1 x 6000 ANSI minimum flap projector – 1080p resolution

Possibility of connecting projector from the control room using HDMI

SPECIAL EFFECTS

Open fire

Using mini smoke bombs

Shooting from a paintball gun

OTHER TECHNICAL REQUIREMENTS

DMX atmospheric hazer (smoke machine)

SCHEDULE (approximate)

09:00–15:00 preparation of lights, sound, set

15:00–16:00 break

16:00–18:00 rehearsal

18:00–19:00 preparation for the performance

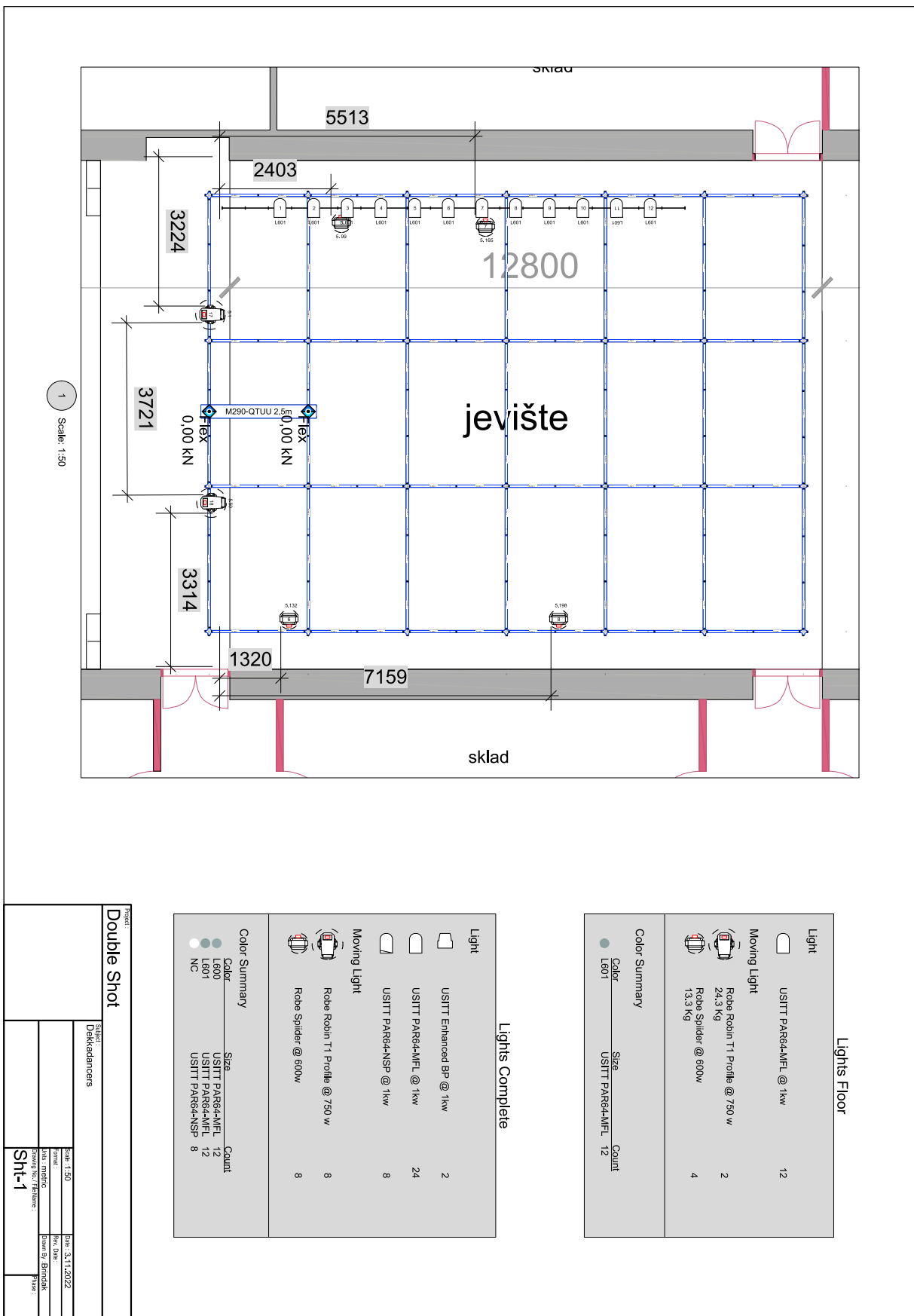
19:00–21:00 performance

21:00–23:00 clean-up

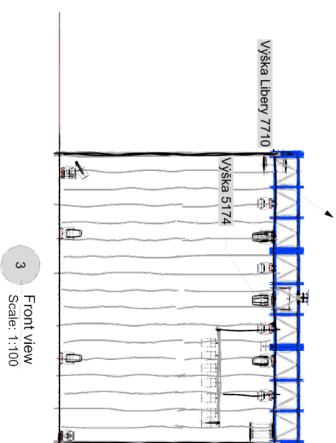
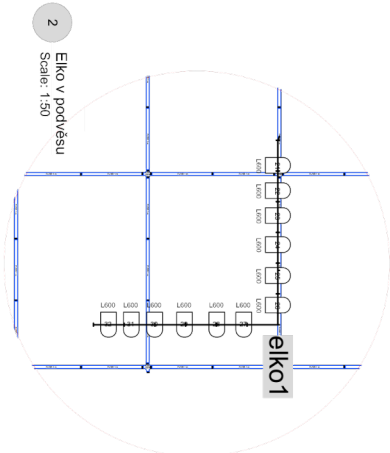
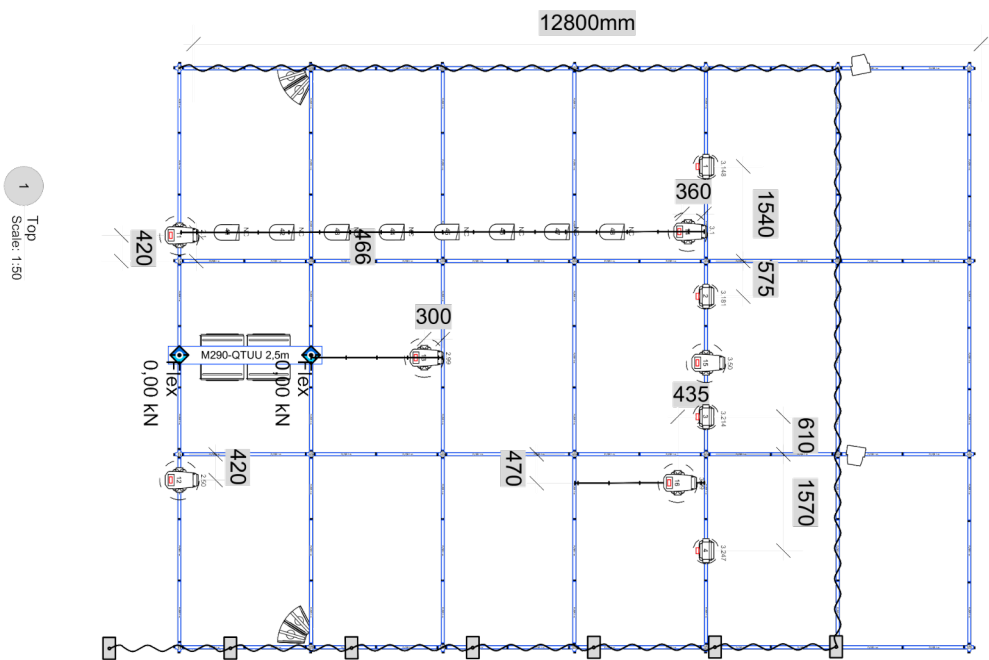
The image displays two architectural drawings of a building structure, likely a stage or performance space, showing structural elements and dimensions.

Top Drawing (jevište): This is a floor plan or section view of the main stage area. It features a grid of structural elements. Key dimensions include a total width of 12800 and a total depth of 8000. The drawing shows various structural components, including beams (labeled 5513, 2403, 3224, 3721, 3314, 1320, 7159, 8000, 727) and supports (labeled 1, 2, 3, 4, 5, 6, 7, 8, 9, 10, 11, 12). A central area is labeled "jevište". A section line is indicated by a dashed line with arrows, labeled "Sht-3".






Bottom Drawing (Double Shot): This is a section view, labeled "Double Shot" and "Sht-3". It shows a cross-section of the structure, revealing internal components and supports. Key dimensions include a total width of 12800mm and a total depth of 8000mm. The drawing shows various structural components, including beams (labeled 5513, 2403, 3224, 3721, 3314, 1320, 7159, 8000, 727) and supports (labeled 1, 2, 3, 4, 5, 6, 7, 8, 9, 10, 11, 12). A central area is labeled "jevište". A section line is indicated by a dashed line with arrows, labeled "Sht-3".



LIGHT RIDER






Color Summary	
Color	Size
LE60	USITT PAR64-MFL 12
NC	USITT PAR64-NSP 8

Light	
	USITT Enhanced BP @ 1kw
	USITT PAR64-MFL @ 1kw
	USITT PAR64-NSP @ 1kw
Moving Light	
	Robe Robin T1 Profile @ 750 w
	Robe Spider @ 600w

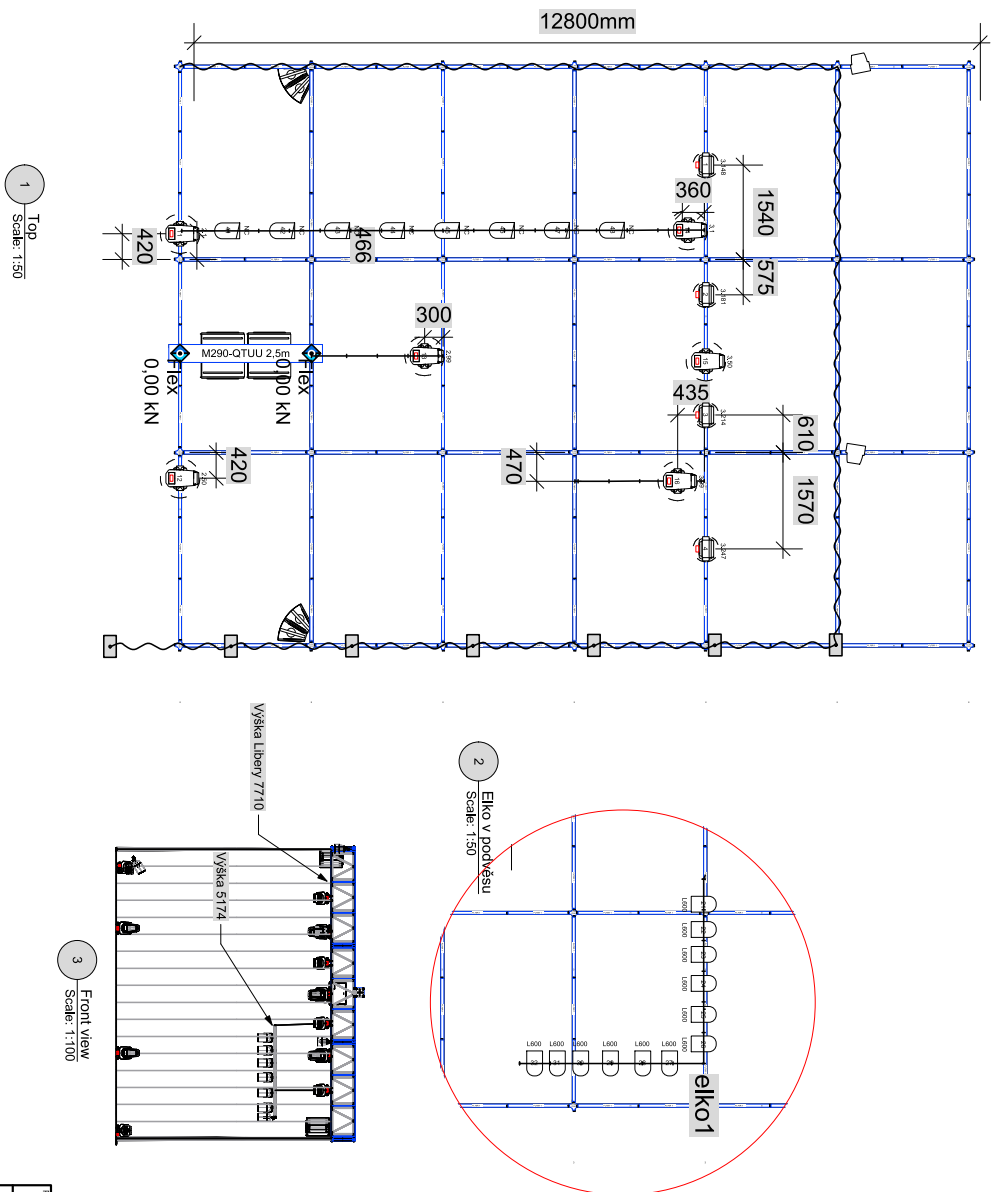
Lights Complete

Color Summary		
Color	Size	Count
LB00	USITT PAR64-MFL	12
LB01	USITT PAR64-MFL	12
NC	USITT PAR64-NSP	8






Moving Light	
	USITT Enhanced BP @ 1kw
2	
	USITT PAR64-MFL @ 1kw
24	
	USITT PAR64-NSP @ 1kw
8	
Moving Light	
	Robe Robin T1 Profile @ 750 w
8	
	Robe Spider @ 600w
8	

[illegible]

LIGHT RIDER








Color Summary		
Color	Size	Count
LE60	USITT PAR64-WFL	12
NC	USITT PAR64-NSP	8

Moving Light		
	USITT Enhanced BP @ 1kw	2
	USITT PAR64-WFL @ 1kw	12
	USITT PAR64-NSP @ 1kw	8
Moving Light		
	Robe Robin T1 Profile @ 750 w	6
	Robe Spilder @ 600w	4

Lights Complete

Color Summary		
Color	Size	Count
L600	USITT PAR64-MFL	12
L601	USITT PAR64-MFL	12
NC	USITT PAR64-NSP	8

Moving Light	
	USITT Enhanced BP @ 1kw
2	
	USITT PAR64-MFL @ 1kw
24	
	USITT PAR64-NSP @ 1kw
8	
Moving Light	
	Robo Robin T1 Profile @ 750 w
8	
	Robo Spider @ 600w
8	

Project	
Double Shot	
Schedule	
Dekeandancers	
Start 1:50	End 3:11:2022
Start 1:50	End 3:11:2022
Time: 10:00 AM	Place: B. BONGJAK
Working by: H. Kurnia :	status :
Sht-2	



SOUND

Standard requirements for audio equipment

A link between audio track and lights is required (QLab)

VIDEO

1 x projector with flap option at least 6000 ANSI – resolution 1080p, (front projection of subtitles for performance, ideally projected on the wall; if not possible, it is necessary to provide a projection screen)

Possibility of connecting projector from the control room using HDMI

OTHER TECHNICAL REQUIREMENTS

DMX atmospheric hazer (smoke machine)

SCHEDULE (approximate)

11:00–15:00 preparation of lights, sound, video, set

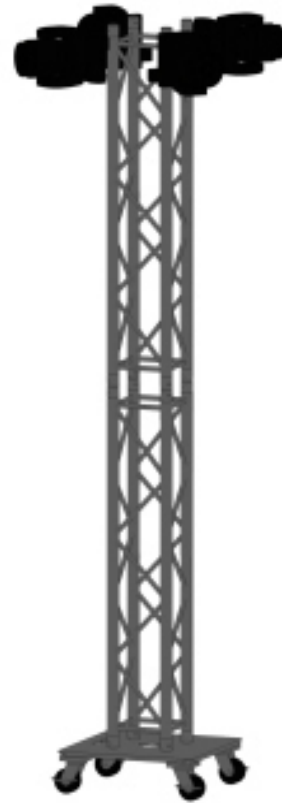
15:00–16:00 break

16:00–18:00 rehearsal

18:00–19:00 preparation for performance

19:00–20:15 performance

20:30–22:00 clean-up



DEKKADANCERS: STABAT MATER

Technical rider



CONTACT

Responsible person: Štěpán Pechar,
stepan@dekkadancers.net, +420 736 177 259

Production / set: Pavel Knolle,
pavel@dekkadancers.net, +420 602 232 462

CONTROL ROOM

Open control booth with a good view of the stage, ideally live-post in the auditorium.

STAGE SIZE (optimal)

Width – 10 m

Depth – 10 m

Height – 5 m

FLOOR

Wooden floor, horizontal. Grey dance floor in good condition, covering the entire stage area. (Upon prior arrangement, DEKKADANCERS can bring their own).

SET DESIGN (provided by DEKKADANCERS)

Construction 5 x 1 m (see attached documentation)

Retractable tripod with light (see attached documentation)

Smoke machine

1 x 2 m mirrored dance floor

Other small props

CREATIVE TEAM:

Concept and dramaturgy: Ondřej Vinklát

Choreography: Ondřej Vinklát, Štěpán Pechar

Music: Marco Rosano

Singing from the recording: Andreas Scholl

Set and costumes: Pavel Knolle, Ondřej Vinklát

Lighting design: Daniel Tesař

Cast: 3 dancers

Running time: about 37 min.

CURTAINS

Blackbox with divided backdrop – covered with classic theatre side curtains.

CHANGING ROOMS

Large enough dressing room for 3 dancers. Includes toilet, mirror, shower, costume rack, clean towels.

STAFF

2 x technician (we need a competent technician knowledgeable about local operation throughout the preparation, performance and demolition of the set)

1 lighting engineer (provided by DEKKADANCERS)
+ local lighting engineer

1 x Local sound engineer

LIGHTS – see light rider below

SOUND

Standard requirements for audio equipment

A link between audio track and lights is required (QLab)

SCHEDULE (approximate)

9:00–15:00 preparation of lights, sound, set

15:00–16:00 break

16:00–18:00 rehearsal

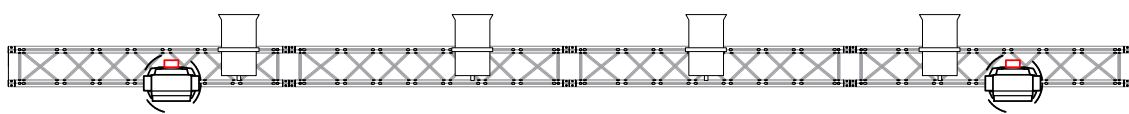
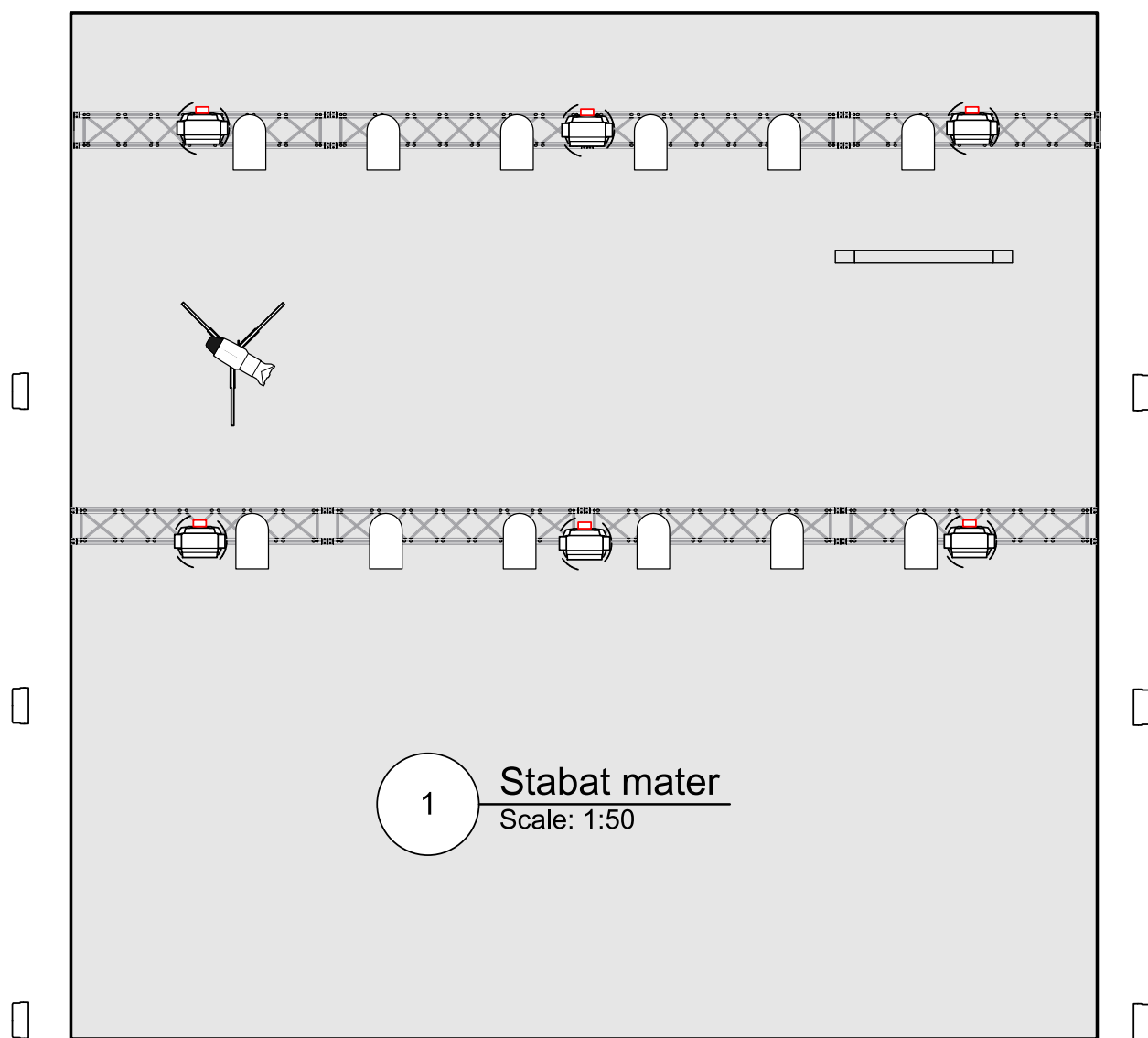
18:00–19:00 preparation for the performance

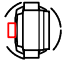

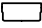


19:00–20:00 performance

20:30–22:00 dismantling



LIGHT RIDER



	Robe Spiider @ 600w	8
	ETC Source4 50deg 750 @ 750w	1
	Sixpar 300 @ 220w	6
	Coemar Passo 650/1000 al PC @ 650/1000w	4
	Altman PAR 64 MFL @ 1KW	12

DEKKADANCERS: THE LAST SUPPER

Technical rider



CONTACTS

Responsible person: Štěpán Pechar,
stepan@dekkadancers.net, +420 736 177 259

Production / set:: Pavel Knolle,
pavel@dekkadancers.net, +420 602 232 462

Lights: Karel Šimek, karlos.simek@gmail.com,
+420 724 221 492,

Sound: Petr Janeček, moire@seznam.cz,
+420 775 064 724

CONTROL ROOM

Open control booth with a good view of the stage, ideally live-post in the auditorium.

STAGE SIZE (optimal)

Width – 10 m
Depth – 12 m
Height – 6 m

FLOOR

Wooden floor, level (part of the set is on wheels, thus any tilting of the floor is undesirable). Black dance floor in good condition, covering the entire stage area. (Upon prior arrangement, DEKKADANCERS can bring their own).

CREATIVE TEAM

Story and direction: DEKKADANCERS + Štěpán Benyovský

Choreography: Štěpán Pechar, Ondřej Vinklát, Marek Svobodník

Music: DEKKADANCERS

Set and costumes: Pavel Knolle

Light Design: Karel Šimek

Cast: 13 dancers

Running time: approx. 80 min. (no intermission)

SET DESIGN

Platform in the rear left corner of the stage near the backdrop – 4 m length x 3 m depth x 1 m height – we prefer the Nivtec system
6 x wooden crates, total size after folding together 3.5 m width x 2 m depth x 1.2 m height (provided by DEKKADANCERS)

Other small props

CURTAINS

Black box with passages

CHANGING ROOMS

Large enough dressing room for 13 dancers (5 women and 8 men). Includes toilet, mirror, shower, costume rack, clean towels.

STAFF

1 x technician (throughout the preparation, performance and demolition of the set we need a competent technician knowledgeable about local operations)

1 lighting engineer (provided by DEKKADANCERS) + local lighting engineer

1 sound engineer (provided by DEKKADANCERS) + local sound engineer

LIGHTS – See light rider below

Programmable console (ideally grandMA2)

Minimum 64 dimmer circuits

58 PAR64 1kW (bulbs: 30 CP61/NSP, 18 CP62/MFL)

6 PC 1kW / Fresnel 1kW with dampers

6 sidelights

SOUND

Live band – see sound rider below for requirements

A link between audio track and lights is required (QLab)

SOUND RIDER

PA SYSTÉM

Professional PA system able to achieve 110dBA sound level in FOH without distortion.
Performance and type appropriate to the space.

We prefer the following sound systems: L-Acoustics, D&B, Nexo, EAW, JBL, Adamson

FOH

The place for the mixing console must be located at a suitable distance and with a good view of the stage.

MONITORS

4x stage monitors on separate AUX outputs (2 NIVTEC, 2 stage)

Quality, powerful and functional monitor cabinets + amplifiers in case of passive boxes + cables.

OTHER TECHNICAL REQUIREMENTS

DMX atmospheric hazer (smoke machine)

SCHEDULE (approximate)

9:00–13:00 prepare stage and lights

13:00–14:00 lunch

15:00–16:30 focus lights, surround,

16:30–18:30 dress rehearsal

18:30–19:30 break, makeup, stage preparation

19:30–21:00 performance

21:00–22:30 dismantling the set and loading

MICROPHONES

2 wireless microphones (Sennheiser, Shure,...) with external antennas with range throughout the stage, no signal dropouts.

TRIPODS

1 small (CAJON)

2 medium (DJEMBE, GUITAR)

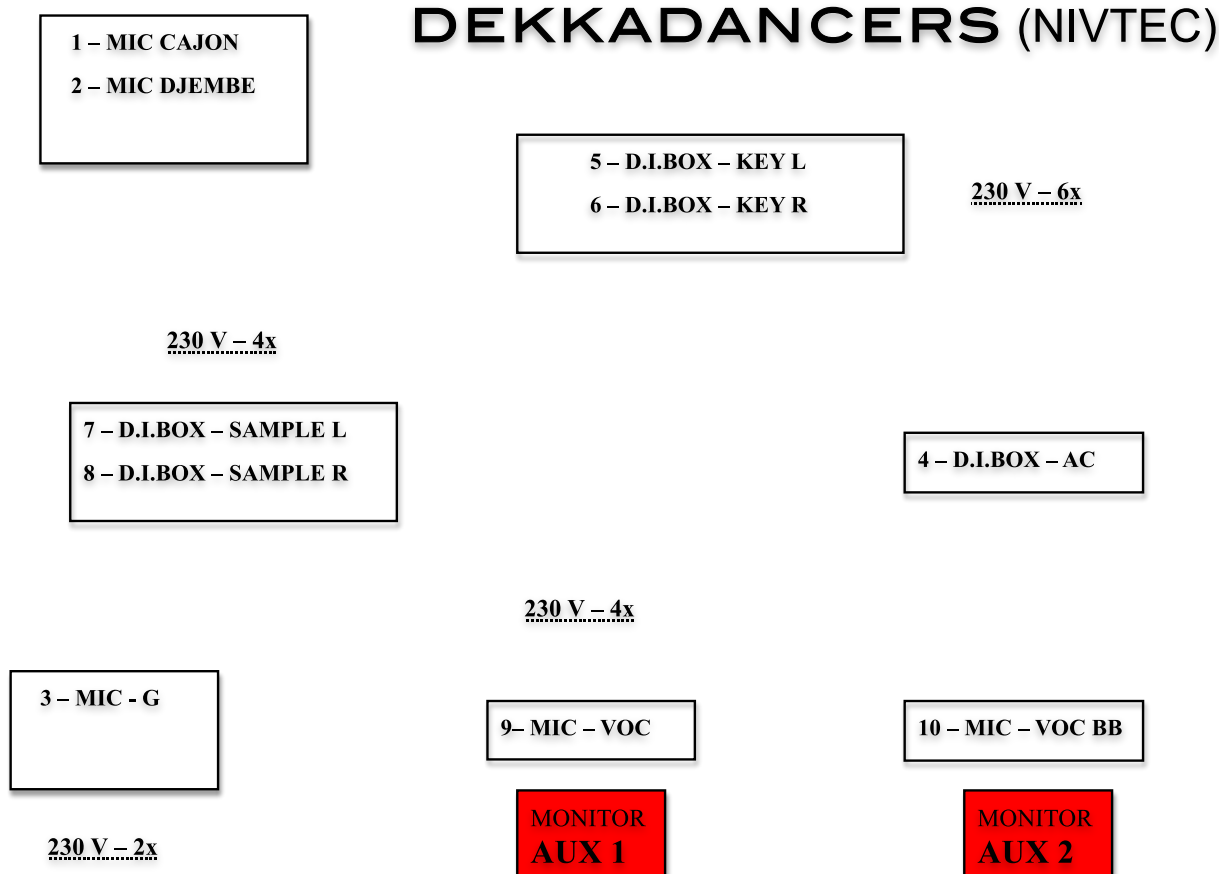
2 tall (VOC, HAND)

Plus an adequate number of XLR cables and D.I. boxes.

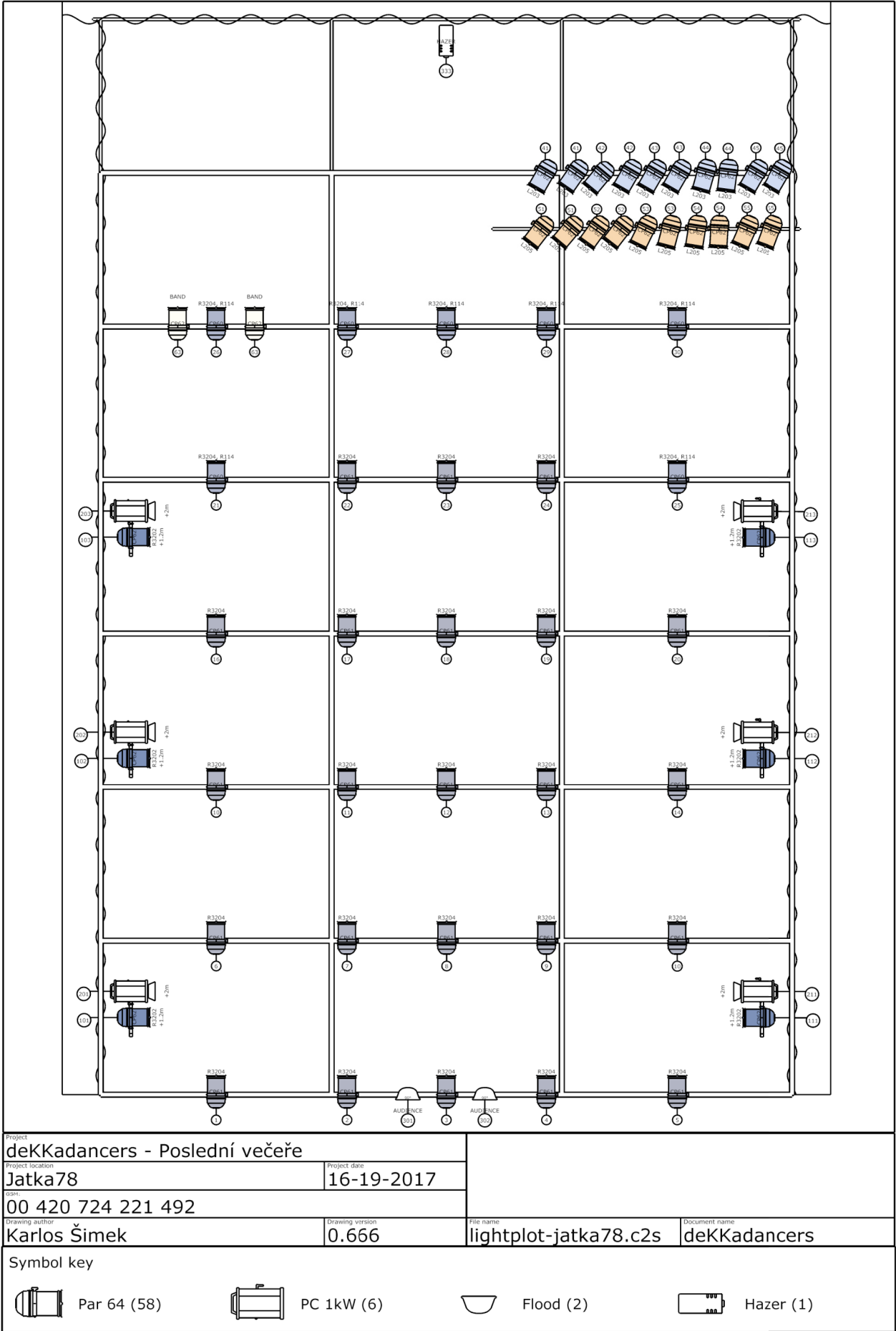
BAND

For musicians we require NIVTEC 4x4 m on 1 m legs and access stairs on the right side from the audience's point of view.

Dekkadancers		STAGE INPUTLIST			
Input	Instrument	Mic/DI Box		stativ	
1	Cajon	Shure B91A	<i>vlastní mic</i>		
2	Djembe	SM 57	<i>vlastní mic</i>	medium	
3	G	Audix i5	<i>vlastní mic</i>	medium	
4	Ac Guit	DI Box			
5	Key L	DI Box			
6	Key R	DI Box			
7	Sample L	DI Box			
8	Sample R	DI Box			
9	Voc	SM 58	<i>vlastní mic</i>	tall	
10	Voc BB	SM 58	<i>vlastní mic</i>		
11	Hand 1			tall	
12	Hand 2				
Optional Analog Outputs					
anlg. outputs 1-4	aux 1 - 4				
anlg. outputs 14	SUBs				
anlg. outputs 15-16	Master				
KONTAKT :		PETR JANECEK	775064724	moire@seznam.cz	



LIGHT RIDER



DEKKADANCERS: LA DOLCE VITA

Technical rider



CONTACTS:

Responsible person:

Štěpán Pechar
stepan@dekkadancers.net,
+420 736 177 259

Production/set:

Pavel Knolle
pavel@dekkadancers.net, +420 602 232 462,

Tereza Baschová

tereza@dekkadancers.net, +420 725 443 669

Light design

Lukáš Brinda
brinda.lukas@gmail.com, +420 775 336 530

Sound:

in agreement with DEKKADANCERS production

CONTROL ROOM

Open control booth with a good view of the stage,
ideally live-post in the auditorium

STAGE SIZE (OPTIMAL)

Width - 10 m
Depth - 10 m
Height - 7 m

CREATIVE TEAM

Theme, choreography and direction: Štěpán

Pechar Dramaturgy and direction: Štěpán

Benyovszký

Set and costumes design: Pavel Knolle

Music: Jan Šíkl

Lighting design: Lukáš Brinda

Cast: 6 x dancers

Running time: approx. 70 min. (no intermission)

FLOOR

Wooden floor, level

Black ballet carpet

SET DESIGN (provided by DEKKADANCERS)

Rolling container

Street lamp + 4 x single pulley, 6 x carabiner, 4 x
loop 60cm, pinrail, 2 x rope 20m - anchoring on
a cleat

Bins

Pot, ladle and disposable dishes

Table for pouring soup at the beginning of the
show (ideally mobile) - we don't have one, rent
on site

+ Other small props

CURTAINS

Rear and side brown horizon with passages
(provided by DEKKADANCERS)

CHANGING ROOMS

2 x changing rooms large enough for dancers (3
men, 3 women).

Includes toilet, mirror, shower, costume rack,
clean towels.

1 x room for production

STAFF

1 x technician (throughout the preparation, performance and dismantling of the set we need a competent technician knowledgeable about local operations)

1 x lighting engineer (provided by DEKKADANCERS)

+ 1 x local lighting engineer

LIGHTING

See Light Rider below.

SOUND

See Audio Rider

OTHER TECHNICAL REQUIREMENTS

DMX atmospheric hazer (smoke machine)

Snow machine

Fan

SCHEDULE (approximate)

09:00-15:00 preparation of lights, sound, video, set

15:00-16:00 break

16:00-18:00 rehearsal

18:00-19:00 preparation for the performance

19:00-20:30 performance

20:30-22:00 dismantling

DOLCE VITA rider 2024

SOUND

F.O.H. MIXING DESK:

Preferred mixing consoles are DiGiCo SD series, Yamaha CL/QL, Allen&Heath SQ/dLIVE, Soundcraft Vi, Midas Pro, with latest firmware update. Console must be placed in audience, central line from the stage

Minimal requirements:

- 24 input channels
 - 8 Aux busses (pre/post switchable)
 - 2x stereo subgroup with full parametric 4-band equalizer
 - 4x 31 band graphic EQ (BSS, Klark Teknik, DBX)
-

PA:

Powerful main system L/R front of stage - full range quality speakers with subwoofers (Meyer Sound, d&b, L-Acoustics, Nexo, Martin, Adamson...) with equal coverage, able to provide 105 dB (RMS) SPL of undistorted sound during the entire performance. Isolated power supply adapted to the venue.

Extra pair of near field speakers as a front fill system ready to use if needed.

In case there is a big or high balcony or a deep audience space (approx. more than 30 meters) we need a delayed line of extra speakers for the main L/R system

If there is a distance between L/R system more than 15 meters - hung up centre cluster needed. The position of all speakers depends on the venue and communication between technicians and will be decided upon setup by our sound engineer.

Access to the sound system control computer at FOH position for eventual system adjustments.

MONITORS:

4 powerful quality monitors, min 12" speakers (Meyer Sound, d&b, L-Acoustics, Nexo, Martin, Adamson...) sends on 2 stereo outputs (front stereo, rear stereo)

SURROUND:

2-4 quality speakers for additional surround effects (Meyer Sound, d&b, L-Acoustics, Nexo, Martin, Adamson...), send on stereo output - delayed

Wireless system:

1x wireless microphone for rehearsals and communication

SOUND TECHNICIAN:


1 in house technician for setup, rehearsals and performance to be present at all time

OTHERS:

Space on table for notebook and 1 rack sound device

Company provide own MacBook with QLab + sound card (8ch out - TRS jack 6,3 - **DI + cables needed!!!**)

[illegible]

 JATKA 78	SHOW	La Dolce Vita
DATE	19.04.2024	
STAGE	La Dolce Vita	
SHEET	Dekk dancers	
SCALE	1:100	SIZE A2

1 LaDolceVita
Scale: 1:35

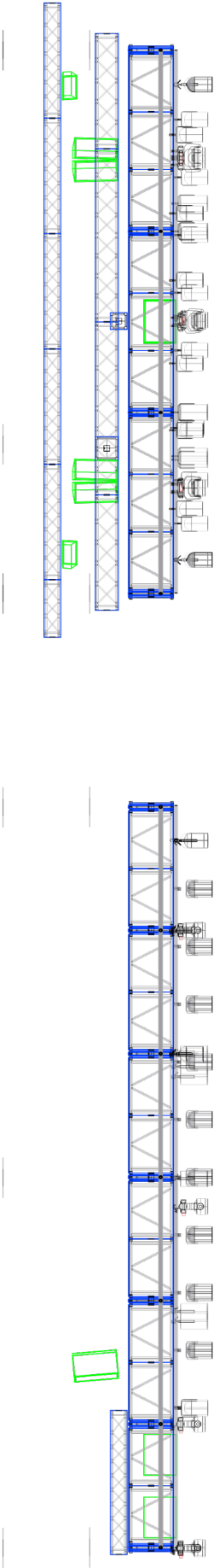
1

2

3

A

A




B

B



4 [Drawing Title]
Scale: 1:50

1 [Drawing Title]
Scale: 1:50

 JATKA 78	
SHOW	La Dolce Vita
DATE	19.04.2024
STAGE	La Dolce Vita
SHEET	Dekladanciers-2
SCALE	1:100
SIZE	A2

1

2

3

DEKKADANCERS: JONATHAN LIVINGSTON SEAGULL

Technical rider



CONTACTS:

Contractual/financial requirements:

Štěpán Pechar

stepan@dekkadancers.net, +420 736 177 259

Artistic supervision of the performance:

Ondřej Vinklát

ondrej@dekkadancers.net, +420 777 726 728

Production/set:

Pavel Knolle

pavel@dekkadancers.net, +420 602 232 462

Tereza Baschová

tereza@dekkadancers.net, +420 725 443 669

Lighting design:

Lukáš Brinda

brinda.lukas@gmail.com, +420 775 336 530

Sound:

Jan Středa

honzaszreda@gmail.com, +420 777 815 986

CREATIVE TEAM

Choreography and direction: Ondřej Vinklát

Script: Ondřej Vinklát, Tomáš Vondrovic

Direction of spoken word: Tomáš Vondrovic

Inspired by the novel by R.D. Bach

Music: Ivan Acher

Set and costumes design: Eva Jiřikovská

Lighting design: Lukáš Brinda

Sound: Jan Středa

Production: Pavel Knolle, Tereza Baschová

Cast: 7 x dancers - DEKKADANCERS, Jiří Lábus,
Vilém Udatný, 5 x Czech Philharmonic Orchestra
musicians

Conductor: Filip Urban

Running time: approx. 90 min. (no intermission)

CONTROL ROOM

Open control booth with a good view of the stage,
ideally live-post in the auditorium

STAGE SIZE (OPTIMAL, baletizol 12 x 7 m)

Width - 14 m

Depth - 10-12 m

FLOOR

Wooden floor, level

Golden ballet carpet 12 x 7 m (provided by
DEKKADANCERS) + mirelon (provided by
DEKKADANCERS)

SET DESIGN

40 pcs Astera (8 pcs provided by
DEKKADANCERS, 32 pcs need to be rented)

40 pcs Avenger C-stand (16 pcs provided by
DEKKADANCERS, 24 pcs need to be rented)

Table + chair for Jiří Lábus

2 x chairs for Jiří Lábus and Vilém Udatný, 6 pcs
sheet music stands (black)

6 pcs chairs for Czech Philharmonic Orchestra
musicians

Please note - according to the selected space, there will be a need to adapt the set design compared to the premises of the Dvořák Hall in the Rudolfinum in Prague (some form of elevation for musicians and actors), which we will deal with based on the possibilities of the specific space).

CHANGING ROOMS

2 x changing rooms large enough for dancers (3 men, 4 women).

1 x dressing room for actors

2 x changing rooms for musicians

1 x dressing room for conductor

Includes toilet, mirror, shower, costume rack, clean towels.

1 x room for production

STAFF

1 x technician (throughout the preparation, performance and dismantling of the set we need a competent technician knowledgeable about local operations)

1 x lighting engineer (provided by DEKKADANCERS) + 1 x local lighting engineer

1 x sound engineer (provided by DEKKADANCERS) + 1 x local sound engineer

LIGHTING

2 x Astera box (1 pc provided by DEKKADANCERS, 1 pc needs to be rented)

8 pcs Robe Spider 2 pcs Par CP62

5 pcs SunStrip

1 pc GrandMA2 - used by 3 Universe - 1488

Attribute Sacn Node (LAN switch)

1 pc Dimmer 12 ch. or hand dimmer for lamps

6 pcs lamps for musicians (provided by DEKKADANCERS)

SOUND

PA

The PA system must be from a professional manufacturer along with appropriately selected sound methods. Examples of professional PA systems are: d&b, L'Acoustics, Meyer Sound, Adamson, Nexo, etc.

The PA system must not be installed or configured contrary to the manufacturer's manual or recommendation.

The sound must cover all auditorium areas evenly throughout the audible spectrum - using front fills, side fills and other fills if needed. The difference in volume between the first row and the FOH must not be more than 6 dB. The PA system should include surround speakers on at least two separate channels (sL, sR). However, four channels are preferred - side stereo and rear stereo.

Monitors

Monitors need to cover the stage evenly. Preference is given to monitors from professional brands such as L'Acoustics, d&b, etc. Preference is given to coaxial 8" or 12" speakers. This is for dancers to listen, so it is also necessary to provide speaker tripods for all monitor speakers.

The musicians and conductor use IEM. 6 x separate IEMs are required.

Microphones, wiring, mixing console, etc.

We will bring the mixer, stagebox, sound card, external reverberation processors and computers with QLAB with us. We also prefer to supply our own microphones with the necessary accessories.

Cast:

2 x violin - 2 x DPA 4099 + 2 x violin holder

2 x cello - 2 x DPA 4099 + 2 x cello holder

Clarinet - 1 x DPA 4099 + universal holder (velcro)

Spoken word - 2 x DPA 6066 + 2 x wrls

It is necessary to supply two-channel wireless transmitters - professional quality bodypack (Sennheiser EW300/EW500, Shure Axient/ULXD, etc.). The receiving antenna must have a sufficiently strong signal from transmitters moving throughout the stage area.

There should also be a sufficient number of functional microphones and 230V cables.

Other requirements

We require a local sound engineer to be present throughout the preparations and production.

Also the ability to intervene in the PA system settings if necessary.

The location of the mixing console and sound engineer must not be in a cabin, under the balcony or on the side of the auditorium.

SCHEDULE (approximate)

09:00-15:00 preparation of lights, sound, set

15:00-16:00 break

16:00-18:00 rehearsal

18:00-19:00 preparation for the performance

19:00-20:00 performance

20:30-23:00 dismantling